

# SWINDON TOWN

FOOTBALL CLUB



**Division 3**

**1974 - 1975**

**Official Programme 10p**



**CRYSTAL PALACE**



# HARRIS

and  
**YOU...**



## **...a mutual benefit match**

Why not sign on for the team which produces the famous HARRIS Sausages, Pies, Bacon & Canned Foods, and you too could enjoy the following benefits

- A variety of working hours, both full-time and part-time, for men and women
- Subsidised transport from Swindon and many other local areas
- Good, clean working conditions
- The security of Europe's biggest meat group behind you
- Plus much more

To find out more about the vacancies we have and how to get on to 'the transfer list' to HARRIS' please contact our Personnel Officer by letter or telephone — we shall be pleased to answer all your questions

**The Personnel Officer C & T HARRIS (CALNE) LTD., Calne, Wilts. SN11 0JL**  
Telephone CALNE 812261 ext 3222 or 3174





© Swindon Town  
Football Company Limited 1972

# Swindon Town Football Company Limited

Registered Office County Ground Swindon Telephone No. 22118

President **W. J. Castle**

Vice-Presidents **J. Davies, F. Plyer,  
H. Williams, R. Fricker.**

Directors Chairman **C. J. Green**

Vice-Chairman **C. Cowley**

Directors **N. Billingham, H. Cowley, C. Day  
A. W. Done, M. Earle, R. Stephenson**

**T. J. Kearsay H. E. Lane**

General Manager **R. A. Morse**

Secretary **R. J. Jefferies**

Team Manager **D. T. Williams**

Commercial Manager **G. Drew**

Club Medical Officer **Dr. J. Nicholas**

## NEWS & VIEWS

Once again we meet Palace, in what is a very important game for both clubs.

Last season, we played our visitors in our final game. It was important for us to make a good showing, although we knew we would be relegated. For Palace it was doubly vital, as they were fighting to escape relegation. After a rather scrappy game Palace won by a goal scored in the last few minutes by Peter Taylor.

Crystal Palace however were relegated, but had they won their last match at Cardiff instead of drawing 1 - 1 they would have escaped. The gate at Swindon was 11,964. Hope we reach that figure today.

Now the two teams meet again, in an important game, but relegation is not involved this time, but promotion. Defeat for either club could virtually end all promotion hopes. At least eight clubs in Division 3 are in contention and possibly the top three positions will not be resolved until the last day. It surely is good for the game to see such keen competition for places.

Swindon has quite a "score" to pay off, as earlier in the season after a disastrous first half, we were defeated 2 - 6.

Included in the visitors team will be England under-23 International Peter Tay-

lor, who joined the club from Southend for a fee of £120,000, yet earlier, as a young lad he had had trials at Selhurst Park and at Tottenham before joining Southend. There still seems a certain amount of luck in the game; although the ability to spot a potential player, is a great asset to any club.

Comment has been made of our away form this season. To date it reads:

W	D	L	F	A
2	5	11	18	37

In addition there is the 1 - 1 draw at West Ham in the F.A. Cup.

It is interesting to note that in Season 1962/63, when Swindon gained promotion to Division 2 for the first time our record was:

W	D	L	F	A
4	12	7	27	34

Those figures speak for themselves regarding the policy of play.

In season 1968/69, when Swindon again gained promotion the results were:

W	D	L	F	A
9	6	8	33	28

Evidently the attacking policy paid off.



---

# Palace make late signings

---

by Tony Pullein

---

Crystal Palace manager Malcolm Allison spent a couple of hectic days prior to the transfer deadline completing signings to bring his promotion-chasing team to full strength. He completed the transfer of forward Phil Holder from Tottenham for £15,000 and was hoping also to sign experienced defender Phil Beal from the same club.

Holder, who had already been on loan to Palace for a month, was only an occasional first-teamer at Tottenham. Beal had made over 300 senior appearances for the White Hart Lane club, winning two League Cup winners' tankards and a UEFA Cup winning medal.

Before those latest transfer moves, the Palace defence had been: Paddy Mulligan, Derek Jeffries, Ian Evans and either Peter Wall or Jimmy Cannon.

Mulligan, a Republic of Ireland international, began his League career with Chelsea in 1969/70 and transferred to Crystal Palace for £75,000 two seasons ago. Evans won Welsh under-23 caps while with Queen's Park Rangers, then had the misfortune to break a leg when on the point of gaining a full cap. Palace paid almost £100,000 for him earlier this season.

Wall started his career with Shrewsbury, made a short move to Wrexham in 1965 and then signed for Liverpool two years later. Palace secured his signature in 1970 and two seasons ago he had a spell on loan to Orient.

Cannon is one of many local discoveries to come through into the first-team, getting his chance two seasons ago.

Mr. Allison has a wide selection of mid-field players but his choice recently has

come down to Jeff Johnson, Peter Taylor and Alan Whittle.

Johnson arrived on a £12,000 transfer from Manchester City last season. He had made a few appearances in their First Division side but spent season 1972/73 on loan to Swansea.

Taylor had the rare distinction, for a Third Division player, this season when he was picked twice for the England under-23 side, scoring in both games. He joined Palace from Southend last season in a £120,000 deal.

Alan Whittle is a player who can play in midfield or as a striker. Another of Palace's expensive purchases, Alan was signed from Everton for £100,000 two seasons ago. A former England youth and under-23 international, Alan made his bow in Everton's League eleven in 1967/68.

Former England midfield player Terry Venables signed from Q.P.R. for £70,000 this season, has not always been in the side. The only player capped at all possible levels by England – schoolboy, youth, amateur, under-23 and full – Terry made his name at Chelsea. An £80,000 transfer took him to Tottenham in 1966 and three years later Q.P.R. paid £70,000 for him.

The striking line includes new man Holder, plus Mick Hill and David Swindlehurst.

Hill had been out of League football for over a year when Palace paid Ipswich £40,000 for him last season. The idea was to add height to an otherwise small front line. Mick began with Sheffield United, moved to Ipswich in 1970 and has two Welsh caps.



Swindlehurst is the club's second highest scorer with 12 goals. (Whittle leads with 14). He graduated through the juniors to make his first senior appearance last season.

Goalkeeper Tony Burns has enjoyed a varied and colourful career, commencing at Arsenal where he won the first-team jersey in 1964/65. He linked with Brighton in 1966, two years later moving on to Charlton. After being freed by Charlton, he went to South Africa for three years. He spent last season in Palace's reserves and now he has won the first-team spot.

Malcolm Allison hopes the tide has at last turned for him. In successive seasons Palace have dropped from the First to the Third Division yet he always had faith in his own methods of building a footballing team. If they can clinch promotion this season, then maybe their dream of a return to the First Division could be achieved as quickly as was their dramatic decline?

These past three years have been agonising for Crystal Palace. Their struggle to stay in the First Division was accompanied by turmoil and heartbreak. The club was virtually re-constituted overnight (in the

board room, managerial and coaching departments plus the administrative staff and fund-raisers), it invested heavily in new players.

Still, relegation came.

The situation was no better in Division Two. And Palace suffered the rare and painful experience of going down in successive seasons.

At least Palace have not emulated the unwanted record of Northampton Town who rose from the Fourth Division up to the First — then dropped all the way back again.

Palace left the Fourth Division in 1961, moved up into Division Two in 1964 and won First Division status for the first time in 1969. Palace's rise was plotted by Bert Head who left during the 1973 shake-up.

The Palace club was formed in 1905 and became a founder member of the Third Division (South) in 1920, winning the championship at the first attempt. Their first stay in the Second Division was quite brief — just four seasons — and then it was back to many years of Third and Fourth Division play.



Peter Eastoe attempts to connect with this centre which split Walsall's defence.



# CRYSTAL PALACE



Back row : D. Horn, Jim Cannon, David Swindlehurst, Paul Hammond, Stewart Jump, Don Rogers (now Q.P.R.), Alan Whittle, F. Lord

Front row : Jeffrey Johnson, Mick Hill, Mark Lindsay, Derek Jeffries, Peter Taylor, Paddy Mulligan



# Third Division Scene

by Tony Pullein

## Penalty Kings

Dave Moss (Swindon) and Dixie McNeil (Hereford) have forged their way to the lead in the Third Division's penalty goals chart. But Huddersfield's Alan Gowling, with a succession of recent conversions, is chasing them fast.

Gowling hit his fifth penalty home in the recent 3 - 1 win over Port Vale. That victory followed swiftly upon their 4 - 1 mid-week success over Southend, giving rise to some faint hope that, even now, this once-famous Yorkshire club can escape the clutches of the Fourth Division. Last Saturday, they picked up a useful point away to Crystal Palace (1-1).

The position, prior to the weekend games, in the Third Division penalty kings chart was:

- 6 penalties — Moss (Swindon) and McNeil (Hereford)
- 5 penalties — Curtis (Charlton), Crossley (Tranmere) Gowling (Huddersfield) and Shannahan (Chesterfield).
- 4 penalties — Lee (Peterborough), Leslie (Colchester) & Richardson (Gillingham).
- 3 penalties — Horton (Port Vale), Waddington (Blackburn) & Walker (Aldershot).

Wrexham's Dave Smallman hit his first hat-trick in League football in the 4 - 0 victory over Aldershot. The Welsh international did hit three goals in an F.A. Cup Tie against Darlington last season, though. Smallman is only the eleventh player to score three times in a Third Division game so far. A few days later he was transferred

to Everton for £70,000.

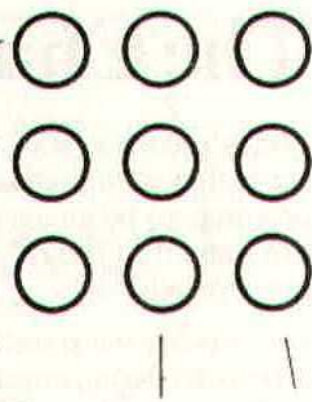
The best individual feat was Chris Duffey's four goal hit for Bury against Halifax on Boxing Day. Dixie McNeil (Hereford) is the only player to claim two Third Division hat-tricks. The complete list of hat-tricksters prior to the weekend games, was:

- 2 Hat-tricks — McNeil (Hereford)
- 1 Hat-trick — Duffey (Bury), Feely (Gillingham), Froggatt (Colchester), Gowling (Huddersfield), Gutherie (Southend), Martin (Blackburn), Moss (Swindon), Rafferty (Plymouth), Smallman and Thomas (Wrexham).

Tranmere Rovers, who live in the shadows of giants Everton and Liverpool, have always had to sell players in order to balance their budget, so it is small wonder they tend to concentrate upon producing good young players.

The latest hopeful to emerge from the Tranmere stable is striker Steve Coppell who has been transferred to Manchester United for £40,000 and went immediately into their Second Division side as substitute. Coppell was spotted by Tranmere while studying at Liverpool University and he was introduced to their League eleven in January last year while still an amateur.

It wasn't until July that he turned professional. Now, with United poised to return to the First Division, Steve Coppell's fairytale could become the more sensational if he follows another ex-Tranmere discovery, Roy McFarland, into the England team!





# The Chairmans Column

Today's game against Crystal Palace, who are still in with high hopes of promotion, promises to be an exciting one, and we can hope that today's result will keep our interests alive also.

On Tuesday we travelled to Bury, and after such a long coach journey, our performance was very gratifying. Michael Dillon playing his first full game for us played very well indeed, and it was a good start for him. We wish him well, and hope that his stay with us will be a long and happy one.

I know that excuses are made when one loses any game, but it is an obvious disadvantage to any team that has to spend several hours sat in a coach prior to playing football. We try and arrange our journeys so that the lads get breaks on these trips, and arrive with plenty of time to get our land legs. No matter how long our journeys are, there is always a band of loyal supporters waiting to greet us, and even when our game is played at night in places like Bury they support us just the same.

There are always card schools in progress on our coach during these trips, and this helps pass the time away and breaks the monotony.

Since writing my last notes, we have suffered further injuries to our playing staff. Joe Butler is the latest casualty. Joe had a cartilage removed on Friday of last week, and hopes to be home by the time these notes are printed. We all wish him a speedy recovery and look forward to seeing him in the team again.

Ron Potter has also had an operation to his ankle, and Ron should also be home by this weekend. Ron has really suffered with this injury, and of course, we all look forward to seeing Ron in action again. Terry Hubbard is still on the side lines, and must be wondering what sort of hoodoo surrounds his injuries. The scare we had with Trevor Anderson

fortunately passed away, as he looked like having appendicitis trouble last week, but he was fit to play at Bury. Danny is certainly getting his share of bad luck with all these injuries, and we can only hope that we are getting to the end of them.

Our Club Dinner held at Blunsdon House proved very popular, and I am sure everyone enjoyed their evening. The presentation to John Trollope for his long service to the Club marking both the 600 league appearances and over 700 games in all for us, was one of the Highlights of the evening.

The periodical meetings of our Liaison Officers is proving very valuable to the Club, and at our last meeting we received three new members in Mr. Pearce from Westbury, Mr. Chilcott from Warminster and Mr. Scott from Abingdon. These gentlemen on the Liaison Committee are available to our supporters in their respective areas for any news or advice that they can give concerning the Club. Some of these members display notice boards with current affairs on them, and of course, in such times as postponements can be helpful in saving our country supporters unnecessary journeys.

Hoping today's game will be an enjoyable one, we thank you for your support.

## Cecil Green

Artistic Decorations in all its branches

12 Armstrong Street

Swindon Wilts

Telephone 4593



## INTER-SCHOOLS PENALTY COMPETITION

Organised by the Swindon  
Schools Football Association

### PENALTY COMPETITION SECOND SEMI-FINAL

For Pinehurst                      Andrew Bowden  
Secondary School.              Gary Beint  
   David Simms

For Sir William Romney's  
School, Tetbury.              Austin Harding  
   Stephen Raines  
   David Weston

For Penhill                      Andrew Findlay  
Secondary School.              Andrew Carter  
   Andrew Hatter

For King Alfred's              Lance Jones  
School, Wantage.              Gareth Williams  
   Andy Whitaker

Winner of the first semi-final was  
Faringdon School.

## MATCH BALL

donated by

Dominion Insurance Co Ltd  
45/46 Commercial Road,  
Swindon.

### Previous donors:-

Borough News, Elgin Drive, Swindon.  
Howard & Sons, Manor Farm, Marston, Devizes.  
C. J. Green, 12 Armstrong St, Swindon.  
W. Collins, 69 Commercial Rd, Swindon (3 balls)  
Regular Away Supporter, Rodbourne Area.  
Graham Drew, Commercial Manager, S.T.F.C.  
Mr. Graham Whittock  
A Loyal Supporter  
S.T.F.C. Supporters Club  
Gordon & Jeremy Law  
Norman Fraser Ltd., of the Brunel Rooms.  
EJW Colour Print Ltd. Headlands Grove, (2 balls)  
Swindon.  
Mrs. Joyce Williams, Wantage  
Hambro Life Assurance Ltd.  
Mr. R. Guggenheim, Christchurch, Hants  
Heath, Building Contractors, 36 Omdurman  
Street.  
Andy Fitzgerald & Paul Plowman  
Robert Stephenson of Cirencester.  
Mr. D. King, 13 Birch Rd., Lightpill.

## RIMES OF SWINDON

### INTERNATIONAL TRAVEL AGENTS

Saturday 29th March	Peterborough	9.0 a.m.
Monday 31st March	AFC Bournemouth	10.0 a.m.

### LUXURY COACH HIRE

Adult	Child
1.65	1.10
1.40	.90

SERVICE DIRECT TO THE GROUND  
ALL SEATS NUMBERED AND RESERVED

Book now at  
102 Commercial Road,  
Swindon  
Telephone 27113

or

46 Cricklade St.,  
Cirencester.  
Telephone 3479

or any Rimes Booking Agents

ALL COACHES FROM COUNTY GROUND CAR PARK



## FROM OUR TAME STATISTICIAN Dr B E Cooper

In my previous article in the last programme I promised to perform my forecasting computations for all teams in the third division that have a chance of promotion this season. The teams could then be put into order according to the forecasts and we would have a forecast of the likely appearance of the top of the third division table at the end of the season. I have now performed the extensive calculations and can report the results. The forecasts are based on results up to and including last Saturday's matches. That is, midweek matches played since Saturday, March 15th including our away match at Bury have not been included. The teams included are all those above Swindon after Saturday's matches and Peterborough who have a number of games in hand. The forecast of the top of division three at the end of the season is given below.

Team	Points last Saturday	Points Forecast	
Blackburn	45	59.3	59
Charlton	44	56.2)	56
Plymouth	42	55.8)	
Crystal Palace	40	51.6	52
Preston	40	51.0)	51
Port Vale	39	50.7)	
Peterborough	35	50.3	50
Swindon	39	49.2)	49
Walsall	39	49.0)	

The first point to notice is the fact that the forecast produces three favourites for promotion namely, Blackburn, Charlton and Plymouth. However, with many matches still to play and with promotion candidates playing each other there is still plenty of scope for upsetting this forecast.

The second point is that the forecast for the second and third team is remarkably close to the 56 points that Danny Williams has set as the Town's target. The evidence certainly supports Danny's claim that 56 points would be enough for promotion.

The third point is that there is very little

difference between the six teams listed in 4th to 9th places. If either Charlton or Plymouth begin to slip (Match of the Day seemed to produce Plymouth's first home defeat last Saturday) any of these six teams could steal a promotion place.

As I said in my previous article Swindon have a remaining programme which allows them to help towards an upset and to sneak a promotion place if Charlton or Plymouth fade. Home matches remain with Crystal Palace, Charlton and Port Vale and there is an away match left with Peterborough whose home record is not good.

Danny Williams asked for 19 points from the last 12 matches of the season. That is 12 points from the last 6 home matches and 7 points from the last 6 away matches. The home match target is certainly within our capabilities even with the extensive injury list. Seven points from the last 6 away matches would represent an improved away performance. The first two of these six away matches against Watford and Bury have produced one point and is one point below Danny's target of just over one per match. Thus promotion is only possible if the away performance can produce 6 points from the remaining 4 away matches and the 5 home matches produce 10 points.

What a finish to the season if the Town could achieve this difficult aim.

I have reproduced a copy of the diagram I maintain throughout the season that summarises Swindon's performance. The matches are listed in the order they were (and will be) played and I record an upward movement of one point for a win, a horizontal movement for a draw and a downward movement of one point for a loss. The thick line in the middle labelled zero therefore represents one point per match. Positions above the line represent the number of points we have more than one per match and positions below the line represent the number of points we



From our Tame Statistician - **continued**

have less than one per match. After last Saturday's match we have 39 points from 36 matches so that we have 3 points more than one per match. After Tuesday's match against Bury we have 40 points from 37 matches and we are therefore at a position with 3 points above one per match.

The lower dotted line represents the forecast I have made based on performance so far. This ends with a predicted score of +3.2 points above one per match at the end of the season. That is after 46 matches we can expect 49.2 points. The upper dotted line represents Danny's target of 56 points. That is, a score of +10 after 46 matches. The thick line represents our actual performance so far and you will see that we are about one point below Danny's target line. 2 away wins over Easter would take us above the target line - always assuming we win our home matches.

I have found this diagram valuable as a record of the team's performance and I offer it as a useful tool to those fans who like to keep records. With a declared target of 56 points included on the diagram

it shows clearly the team's progress to the target. I also keep two other exactly similar diagrams, one for home matches and one for away matches. The away match diagram remains well below the one point per match line but the home match diagram shows, after the initial slip against Bury in the first match, a steady climb upwards at an impressive rate.

Whatsoever the outcome of the remaining 10 matches, may I take this opportunity to say that I have enjoyed my football at the County Ground this season and that I will continue to do so for the remainder of the season. I hope that these occasional articles written by a dedicated fan with a statistical bent have proved interesting to others.

*continued on page 15*

## WANTED

**LADIES** to canvass our Discount Club.

Why not ask your friend to join you as a team to earn extra money for the forthcoming holidays — top commission paid.

Ring Swindon 22118 or call.



# CASTLE'S

Office and Bakery

**4 and 5 MARKET STREET SWINDON**

Telephone 22017

Specialists—

**Birthday Cakes : Wedding Cakes**  
**Dairy Cream : Pastries : Crusty**  
**Bread : Buns : Rolls : Sponges**





# DIVISION 3

DATE	OPPONENTS	RESULT	
		F	A
1974			
Aug. 17	Bury	H 0	2
20	League Cup 1 Portsmouth	H 0	1
24	Port Vale	A 2	2
31	Blackburn Rovers	H 2	0
Sept. 3	Tranmere Rovers	H 0	0
7	Crystal Palace	A 2	6
14	Plymouth Argyle	H 2	0
17	Aldershot	H 3	2
21	Charlton Athletic	A 3	3
24	Walsall	A 0	2
28	Watford	H 2	2
Oct. Oct. 5	Chesterfield	A 2	0
	Southend United	H 2	0
12	Halifax Town	A 0	0
19	Wrexham	H 2	1
21	Tranmere Rovers	A 0	3
26	Huddersfield Town	A 2	2
Nov. 2	Grimsby Town	H 3	2
5	Chesterfield	H 1	0
9	Brighton & Hove Albion	A 1	1
16	Gillingham	H 1	0
23	Reading F.A. Cup	H 4	0
30	Colchester United	H 4	1
Dec 4	League Cup 5	1	2
7	Hereford United	A 1	2
14	F.A. Cup 2 Maidstone	H 3	1
21	Peterborough United	H 0	1
26	Plymouth Argyle	A 3	4
28	AFC Bournemouth	H 2	1
1975			
Jan. 4	F.A. Cup 3 Lincoln	H 2	0
11	Hereford United	H 1	0
18	Colchester United	A 0	3 (A)
F.A. Cup 25 4	West Ham United	A 1	1
28 Replay	West Ham United	H 1	2
Feb. 1	Brighton & Hove A.	H 1	0
8	Grimsby Town	A 0	2
12	Aldershot	A 1	0
15	Preston North End	H 1	0
18	Preston North End	A 0	2
22	Gillingham	A 1	3
Mar. 1	Blackburn Rovers	A 0	2
4	Colchester United	A 0	2
8	Walsall (6)	H 3	0
15	Watford	A 0	1
18	Bury	A 0	0
22	Crystal Palace	H	
28			
29	Peterborough United	A	
31	AFC Bournemouth	A	
Apr. 1	Charlton Athletic	H	
5	Huddersfield Town (SF)	H	

		RESULT	
		F	A
11	Southend United	A	
19	Halifax Town	H	
22	Port Vale	H	
26	Wrexham	A	
May 3	F.A. Cup Final		

## FOOTBALL COMBINATION

DATE	OPPONENTS	RESULT	
		F	A
1974			
Aug. 17	Ipswich Town	A 0	5
20	Bristol Rovers	A	Postponed
24	Oxford United	H 0	4
27	Bristol Rovers	H 0	1
31	Arsenal	A 0	1
Sept. 7	Q.P.R.	H 0	3
14	West Ham United	A 0	5
18	Oxford United	A 0	1
21	Crystal Palace	H 0	3
28	Bournemouth	A 2	2
12	Cardiff City	H 1	0
19	Chelsea	A 0	4
Nov. 2	Bristol City	A 0	1
9	Tottenham Hotspur	H 0	2
16	Luton Town	A 1	3
23(1)	Norwich City	H	Postponed
30	Birmingham City	A 2	2
Dec. 7	Leicester City	H 1	2
17	Fulham	A 0	2
1975			
4 (3)			
11	Leicester City	A 1	1
18	Birmingham City	H	postponed
Feb. 1	Tottenham Hotspur	A 0	1
4	West Ham United	H	Postponed
8	Luton Town	H 1	3
12	Reading	A 0	2
15(5)	Norwich City	A 0	2
22	Bristol City	H 1	1
25	Crystal Palace	A 0	3
Mar. 1	Arsenal	H 1	3
4	Plymouth Argyle	A 0	5
11	Southampton	A 3	1
15	Fulham	H	Postponed
18	Ipswich Town	H 0	2
25	Southampton	H	
29	Bournemouth	H	
Apr. 8	Cardiff City	A	
12	Reading	H	
15	Plymouth Argyle	H	
26	Chelsea	H	
29	Q.P.R.	A	



## FOR THE RECORD

### Division III — 8th March, 1975

#### SWINDON TOWN 3 (McLaughlin, Prophett & Moss)

Barron, Dixon, Trollope, Jenkins, Burrows, Prophett, Moss, Butler, Eastoe, McLaughlin, Anderson, Stroud (s).

#### WALSALL 0

Kearns, Fry, Harrison, Robinson, Bennett, Atthey, Taylor, Andrews, Wright, Buckley, Birch, Casewell (s).

### Football Combination — 11th March, 1975

#### SOUTHAMPTON 3

#### SWINDON TOWN 1 (Farr)

Lawrence, Chalklin, Tanner, Young, Broom, McGovern, Gill, Gilligan, Farr, MacLean, Gardner, Algar (s)

### Division III — 15th March, 1975

#### WATFORD 1 (Garner)

Rankin, Butler, Walsh, Joslyn, Goodeve, Garner, Scullion, Bond, Greenhalgh, Mayes, Downes, Mercer (s)

#### SWINDON TOWN 0

Barron, Dixon, Trollope, Jenkins, Burrows, Prophett, Moss, Stroud, Eastoe, McLaughlin, MacLean, Dillon (s)

### Football Combination — 18th March, 1975

#### SWINDON TOWN 0

Lawrence, Chalklin, Tanner, Thompson, Broom, Algar, Gill, Gilligan, Farr, Syrett, Gardner, Brinkworth (s)

#### IPSWICH TOWN 2

### Division III

#### BURY 0

Forrest, Hoolickin, Kennedy, Nicholson, Hulme, Bailey, Buchan, Riley, Spence, Rowland, Hamstead, Williams (s)

#### SWINDON TOWN

Barron, Dixon, Trollope, Dillon, Burrows, Prophett, Moss, Jenkins, Eastoe, McLaughlin, Anderson, Stroud (s)

## HOME ATTENDANCES

Opponents	Attendances	League Average
Bury	6441	6441
Portsmouth (L.Cup)	4779	—
Blackburn Rovers	4951	5696
Tranmere Rovers	5511	5634
Plymouth Argyle	5496	5599
Aldershot	5733	5626
Watford	6326	5743
Southend	6690	5878
Wrexham	6731	5985
Grimsby Town	7198	6119
Chesterfield	8277	6335
Gillingham	8847	6563
Reading (F.A.Cup)	13,365	
Colchester	10072	6856
Maidstone (F.A. Cup)	10016	
Peterborough	9023	7022
Bournemouth	9929	7230
Lincoln City(F.A.Cup)	11,791	
Hereford United	11,781	7534
West Ham United (F.A. Cup)	26749	
Brighton	9552	7659
Preston	11892	7968
Walsall	8964	7967



Mick Kearns, the Walsall goalkeeper, dives to save this shot during the Town's last home game.



# **Sharpe & Fisher**

## ***THE* Builders Merchants**

Regular Deliveries in the Swindon  
and surrounding areas

**Cheltenham · Hereford**

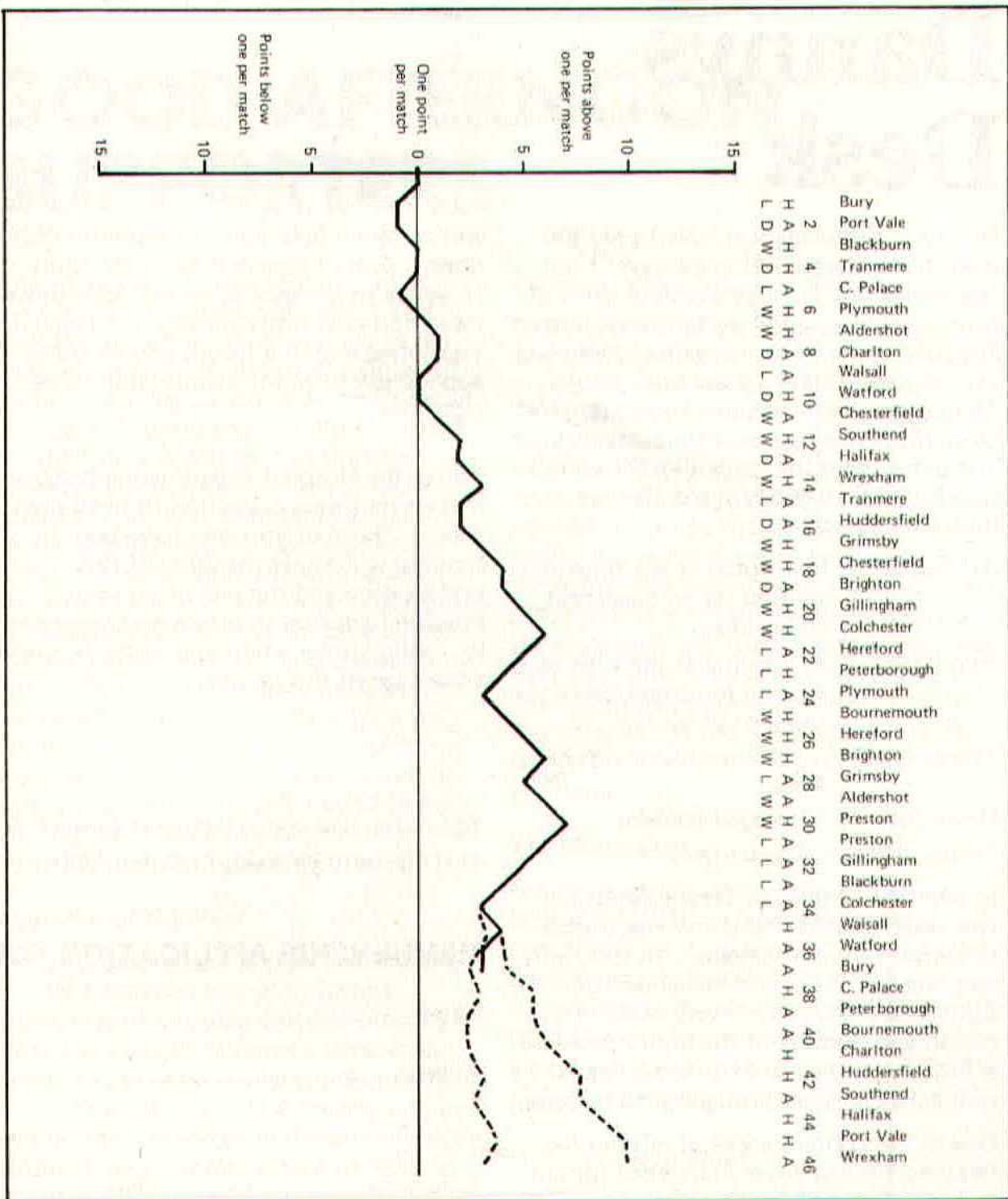
**Cardiff · Llanelli**

***Gaining more new fans  
everyday!***



***The Evening Advertiser***





*Maylott Studios*

Martin Davison Ltd.

For Group and Sports Photographs

Official Photographers to  
Swindon Town Football Club

**31 Faringdon Road**

Telephone 22792

For High Class Central Heating, Plumbing

Painting and Decorating

Electrical Installations and repairs

**NORTH WILTS**

Sanitary and Heating Co. Ltd.

NEWPORT ST., SWINDON

Telephone 5373/4



# Danny's Desk

Our away performances have, to say the least, been disappointing during the last few weeks but Tuesday evenings game at Bury was a very good performance indeed and, of course, the point gained there was very useful. What of these poor results. The biggest criterion must be the terrible crop of injuries that we have sustained and our present list reads like the admission list of Emergency Ward 10 - just look for yourselves.

Joe Butler - in hospital at the time of writing for an operation to his knee.

Ron Potter - in hospital at the time of writing for attention to the tendons of his leg.

Terry Hubbard - still troubled with his knee.

David Syrett - damaged tendons.

Jimmy Allan - elbow injury.

In addition to this list Trevor Anderson was taken ill at Watford and was unable to appear in this vital game. In fact only two players, John Trollope and Peter Eastoe, have played in every match this season and because of the injury problem it has been impossible to field a regular well-balanced side throughout the season.

One of the consequences of injuries has required finding cover in defence for our depleted side and for this reason it was necessary for me to sign Mike Dillon from Tottenham Hotspur. Mike played at Bury and gave an excellent performance.

And now to a totally different subject - that of our Discount Scheme. For those of you who have not yet joined this excellent club, my advice to you is to adopt the motto 'a half penny a day keeps inflation away'. Yes, that is all that it costs and although we do not guarantee to cure inflation, membership

will certainly help you to keep your costs down. And of course it helps the Club. If we are to advance as we would wish we must find alternative income so please, do yourselves and us a favour and send the application form for membership to us right away.

Today the Hospital Broadcasting Society make a half-time collection to swell their funds. Those of you who have been in hospital will know the value of this organisation and the rest of you can imagine I am sure so please give generously - who knows when you might be taking advantage of this service.

To: The Secretary, Swindon Town F.C.,  
County Ground, Swindon, Wilts.

## MEMBERSHIP APPLICATION FORM

Name .....

Address .....

Signed ..... Date .....

*(I am over 18 years of age)*

### Type of Membership required:

HALF YEAR	—	£1.00
ONE YEAR	—	£2.00

I enclose Cheque/Cash/Postal Order for the sum of £..... Half/One Year Membership. (Delete as applicable)

If you do not wish to spoil your programme just write the above on a piece of plain paper.



---

# GOOD AFTERNOON SUPPORTERS

First of all I would like to thank all of my good and loyal friends both inside and outside the club for their support in our combined efforts to elevate the financial burden borne by Swindon Town Football Club in their quest to keep Professional Football alive in this part of the West Country. The success we have already attained is no mean feat, and between us we are proving that the task we have set ourselves can be done, this assures me of the faith so many of you have in our future and a willingness to help our club rise to even greater heights during the seasons to come. Although I have only been here just over twelve months I have been well and truly caught up in the atmosphere of Football in Swindon, and I am proud to belong to a club with such a stake in the past, but even more-so a club with an even bigger stake in the future, of this I am sure.

## Supporter of the Year

The Chairman of the Supporters Association Mr. Lewis has agreed to form a committee of five who will meet during the coming weeks to reach a democratic decision as to who will be the Supporter of the Year 1975/76. The Trophy will be held by that person until the end of next season. The presentation will be made at one of our home matches towards the end of the season by Mr. Green our Chairman. If there is anybody you would like to nominate for this award please write to the club stating the person you would like to nominate and giving the reasons why you think they should receive it, all nominations will be considered by the committee and a vote will be taken at the end of the meeting to decide who will be the winner for this year.

## Swindon Town Discount Club.

Its no secret that the success of this scheme and the response from Local Traders and the public alike has been tremendous. Already shoppers in Swindon who belong to our scheme have made great savings on their everyday purchases and its obvious to all concerned that in these days when we have all got to tighten our belts, so to speak, this is the thing to belong to. Just think, for only two pounds a year, you can make savings on many things you buy at the shop each week; that's just a little over ½p a day, now is your chance to join. If you haven't already taken advantage of this offer call at the office for an application form and start saving on next week's shopping.

## The Moonraker

Our new weekly competition "THE MOONRAKER" is now well and truly established we have already paid out over £2,000 in prize money, proof of its success I'm sure you will agree. Maybe you would like to become an agent, if you would call or write to THE POOLS OFFICE, here at the COUNTY GROUND.

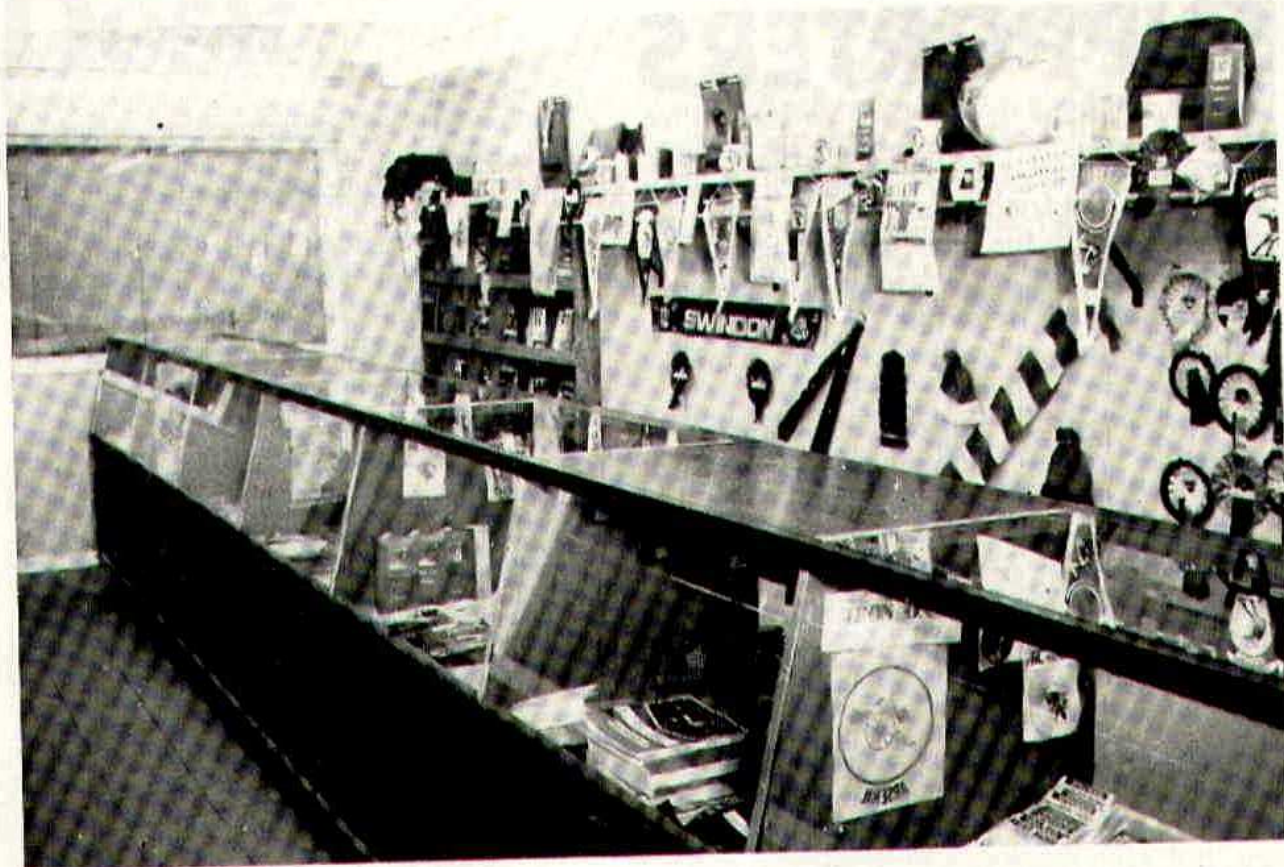
Yours in Sport,

**GRAHAM DREW**

Commercial Manager.



# TOWN SOUVENIRS



## PRICE LIST

Swindon Town Papermate Pens	66p		
Swindon Town Ball Point Pens	8p	Ball & Boot Key Rings	20p
Satin Scarves in Club colours	80p	Pencils	6p
Rosettes	14p	Rainhoods	6p
New Lapel Badges	30p	Bracelets - large	28p
Satin Pennants	22p	Bracelets - small	26p
PVC Pennants	25p	Pendants (Swindon Town)	26p
Maxi Pennants	45p	Autograph Books	27p
Shirt badges	13p		
Philatelic League Cup Covers	25p	Combs	8p
1969 League Cup Final programmes	5p	Sew on Patches	30p
1969 League Cup Ties	25p	Car Sticker Badges(Self Adhesive)	16p
Programmes	10p	Chrome Pendants (First Division)	33p
New Club Ties	£1.15p	Iron-ons	15p
Players' photographs	15p	Button Badges 1st Division only	5p
Bob hats	75p	First Division Fringed Pennants	23p
Kopper Jackets	£1.93p		
Shoulder bags	£2.00	Club Tankards & Mugs	65p
Duffle bags	£1.05p	Swindon Town and 1st Division Rings	34p

WE ARE PLEASED TO ACCEPT ORDERS BY POST. - PLEASE INCLUDE POSTAGE.

We also sell any item in the Sports line and shall welcome your enquiry.



FOR THE RECORD	Football League		League Cup	F.A. Cup		Football Combination		Midland Youth	
	Apps	Gls		Apps	Gls	Apps	Gls	Apps	Gls
J. Barron	35		1	5					
J. McLaughlin	30 (2 sub)	3	1	5					
N. Trollope	37	2	1	5					
T. Hubbard	24	1	1	3		1			
R. Potter	12 (1 sub)		1						
D. Munks	3 (2 sub)		1			11			
D. Moss	31 (2 sub)	11	1	5	2				
D. Syrett	16 (7 sub)	3		(2 sub)		8	2		
P. Eastoe	37	18	1	5	5				
H. Maclean	17 (3 sub)	1	1			7			
T. Jenkins	21 (3 sub)	1	1	2(3 sub)		4			
W. Dixon	32 (3 sub)	1	1	5		2			
F. Burrows	23 (3 sub)	2	(1 sub)	5		5			
J. Butler	26 (2 sub)	2		5		1			
C. Prohett	32 (1 sub)	1		5	1	1			
J. Allan	2					16			
T. Anderson	18 (1 sub)	1		5	2				
		1 o.g.			1 o.g.				
G. Chalklin						24	1	13	1
K. Tanner						28		16	
G. Broom						19	1		
A. Young						22			
M. Thompson						14 (4 sub)		16	2
K. Gill						27	1		
I. Farr						24 (3 sub)	5	16	9
M. McGovern	1 (1 sub)					17	2		
N. Algar						5 (6 sub)		13(3 sub)	3
T. Brinkworth						2 (5 sub)		12(2 sub)	
N. Berry						5			
M. Hooman						1 (1 sub)		14	
J. Fisher						1		4(3 sub)	
J. Way						1		2	
N. Cowley						1 (1 sub)		8(1 sub)	
K. Styles						3			
J. Gilligan						19 (2 sub)	2	15	4
S. Slattery						7 (3 sub)			
B. Parry						3			
C. Gardner						15 (3 sub)		15	6
M. Elias						2			
K. Stroud	11 (4 sub)					4			
M. Lawrence						7		12	
A. Hayduck								2	
G. Goodwin								1	
K. Kendall								1	
A. Sloman								1	
B. Thompson								1	
J. Gough								1	2
R. White								1	
T. Young								1	
G. Harvey								1	
K. Langley								1	
R. Brinkworth								2(4 sub)	1
A. Ashman								1	
S. Price								1	
T. Pooley						3			
J.A. Gilligan								2(1 sub)	
R. Andrews								2	
A. Taynton								1	
K. Edwards								1	
M. Dillon	1 (1 sub)								





John McLaughlin scoring Swindon's first goal in the fourth minute against Walsall.

## SWINDON MODEL CENTRE

(J R Korda)

2 CIVIC CENTRE THEATRE WAY  
SWINDON - Telephone 26878



**The SHOP with the STOCK**  
SPECIALISTS IN RADIO CONTROL AIRCRAFT

Largest selection of Plastic and  
Wood Kits in SWINDON

★ ★ MAIL ORDER ★ ★



**If the  
Town win,  
celebrate  
with a pint  
of Arkells.  
If they lose,  
drown your  
sorrows  
in it.**

**ARKELLS** 



# WINDSCREEN REPLACEMENT SPECIALISTS

(MOBILE SAME DAY SERVICE)

## A.W.S.



## Windscreens

Telephone

**STRATTON ST. MARGARET 5169**

ALSO AT

**NEWBURY 46343 & 44144**

## The man in the middle

### PETER WALTERS (Bridgwater)

A headmaster, he began refereeing at college and graduated through the South Western League and the Football Combination on to the League line in 1962. Promoted to the supplementary list in 1965 and the full list two years later. Refereed the 1969 F.A. Amateur Cup Final, an F.A. Youth Cup semi-final in 1967 and was on the line for a European Cup Winners Cup quarter-final match in Hungary in 1967. Married with three children, he is vice-chairman of the Somerset County Referees' Association and his hobbies include gardening and cine photography.

## Key of the board

A	Brighton v Blackburn
B	Colchester v Chesterfield
C	Gillingham v Port Vale
D	Grimsby v Bury
E	Halifax v Watford
F	Hereford v Walsall
G	Huddersfield v Charlton
H	Preston N.E. v Aldershot
J	Wrexham v Peterborough
K	Birmingham v Q.P. Rangers
L	Burnley v Arsenal
M	Chelsea v Middlesbrough
N	Everton v Ipswich
O	Leicester v Wolverhampton
P	Luton v Leeds
Q	Manchester City v Coventry
R	Newcastle v Derby
S	Sheffield Utd. v West Ham Utd.
T	Tottenham H. v Liverpool





Do you require

**Tracked or Wheeled Excavators**

**Tracked or Wheeled Shovels**

**Tractors and Scrapers**

**Bulldozers**

**Tipper Lorries**

**Low Loaders**

***THEN HIRE FROM***

**H Hibberd Ltd**

**PLANT HIRE CONTRACTORS**

**29 Newport Street, Swindon**

**Tel: Swindon 6125 or 23876**



# SWINDON TOWN v CRYSTAL PALACE

SATURDAY, MARCH 22nd 1975.

K.O. 3 p.m.

## SWINDON TOWN

1. Barron
2. Dixon
3. Trollope
4. Stroud
5. Burrows
6. Prohett
7. Moss
8. Jenkins
9. Eastoe
10. McLaughlin
11. Anderson
12. Dillon

Division  
Three

## CRYSTAL PALACE

1. Burns
2. Wall
3. Cannon
4. Johnson
5. Jefferies
6. Evans
7. Holder
8. Hinshelwood N.
9. Hill
10. Swindlehurst
11. Taylor

Ref: MR. P. R. WALTERS (Bridgwater)  
Red Flag: MR. T. ATKINS (Exeter)  
Yellow Flag: MR. B. A. CHAMPION (Bristol)

**TEXACO**

*We are the  
champions!*

Emmerson Fittipaldi World Champion 1974  
using Texaco Havoline Oil and Texaco Petrol.

